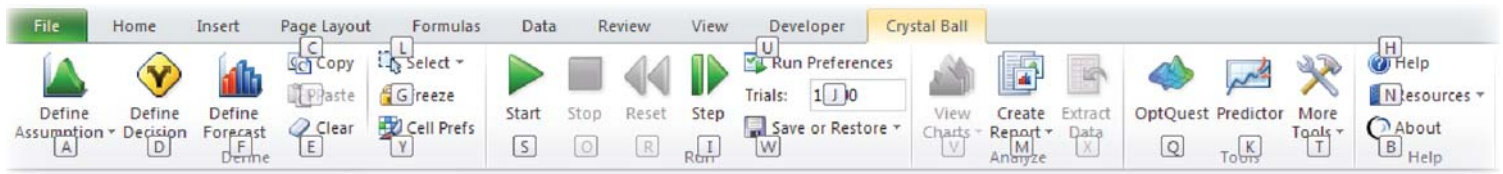


Need help with your Crystal Ball and Excel Models? Call 1-888-879-8440 for immediate assistance

## The Crystal Ball Ribbon



### Defining Model Input & Outputs

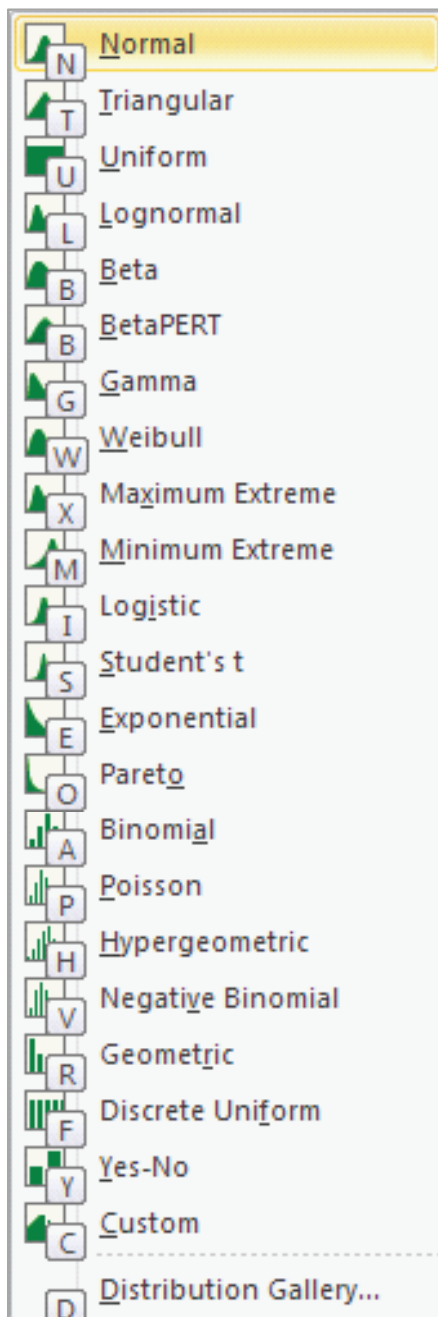
Define decision	alt-c, d
Define forecast	alt-c, f
<b>Define assumption</b>	<b>alt-c, a +</b>

### Editing data

CB Copy data	alt-c, c
CB Paste data	alt-c, p
CB Clear data	alt-c, e
CB Cell preferences	alt-c, y
Select all assumptions	alt-c, a
Select all decisions	alt-c, l, d
Select all forecasts	alt-c, l, f
Select (some)	alt-c, l, s

### Analyzing data and results

Extract data	alt-c, x
Create report	alt-c, r +
Assumption Report	alt-c, r, a
Decisions Var Report	alt-c, r, d
Forecasts Report	alt-c, r, f
Full Report	alt-c, r, r
Index Report	alt-c, r, i
Custom Report	alt-c, r, c
Report Preferences	alt-c, r, p



### Running simulations

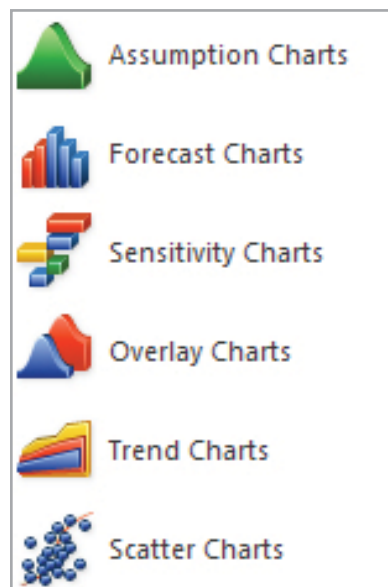
Start simulation	alt-c, s
Stop simulation	alt-c, o
Reset simulation	alt-c, r
Single step	alt-c, i
Freeze	alt-c, g
Run preferences	alt-c, u
Save results	alt-c, w, v
Restore results	alt-c, w, e

### Using CBTools

OptQuest	alt-c, q
CB Predictor	alt-c, k
Batch Fit	alt-c, t, f
Bootstrap	alt-c, t, b
Correlation Matrix	alt-c, t, c
Data Analysis	alt-c, t, a
Decision Table	alt-c, t, d
Scenario Analysis	alt-c, t, s
Tornado Chart	alt-c, t, t
2D Simulation	alt-c, t, 2

### Working with Charts

Open Chart in Cells	alt-c, v, n
Cascade Charts	alt-c, v, c
Close all Charts	alt-c, v, l
Open Chart by type	alt-c, v, Menu



### Crystal Ball Resources

Crystal Ball Doc	alt-c, n, c
Oracle EPM Doc	alt-c, n, d
Examples Guide	alt-c, n, e
Welcome Screen	alt-c, n, w

### Need more help? Call Today!

#### Support

1-888-879-8440 x101

#### International Sales:

1-888-879-8440 x9  
+1-514-278-2221 x9

Need help with your Crystal Ball and Excel Models? Call 1-888-879-8440 for immediate assistance

## Forecast Window Commands

### Navigate

Bring windows to front alt-tab, CB icon

### Edit

Copy chart, statistics, percentiles alt-e, c  
 Page setup alt-e, u  
 Print preview alt-e, v  
 Print alt-e, p

### View

Frequency alt-v, f  
 Cumulative frequency alt-v, c  
 Reverse cumulative alt-v, r  
 Statistics alt-v, s  
 Percentiles alt-v, p  
 Goodness of fit alt-v, g

### Forecast

Open sensitivity chart alt-f, s  
 Fit probability distribution alt-f, f

### Preferences

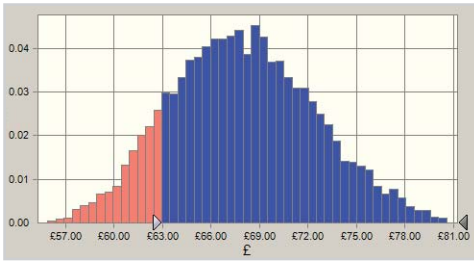
Forecast alt-p, f  
 Chart alt-p, c

### Help

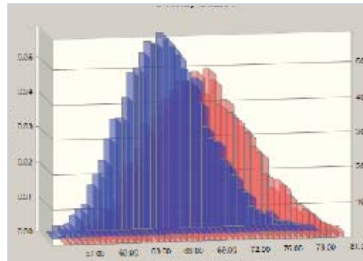
Forecast help alt-h, f

## Charts & Hotkeys

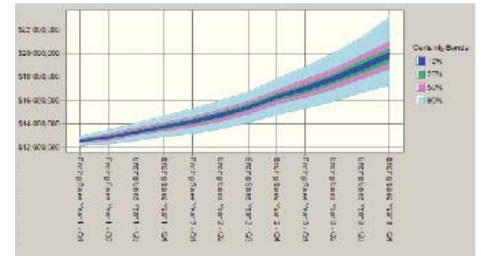
**Forecast (Output)**



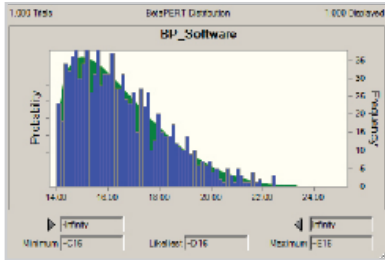
**Overlay Chart**



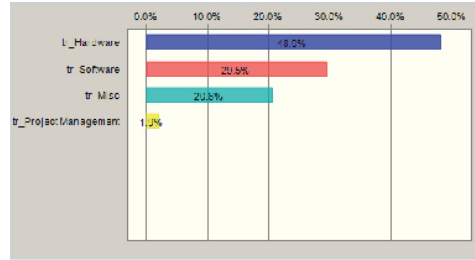
**Trend Chart**



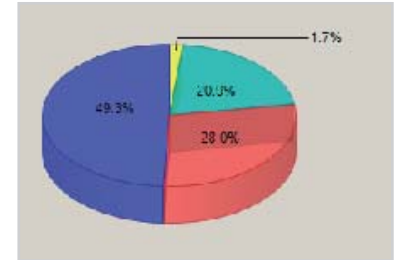
**Assumption (Input)**



**Sensitivity Chart**



**Sensitivity Pie Chart**



## Hotkeys

Changes chart views (frequency, cumulative frequency ... )	ctrl-d
Changes number of bins (groups)	ctrl-b
Cycles through gridline settings	ctrl-l
Cycles through marker lines (mean, median ... )	ctrl-rn
Toggles legend on and off	ctrl-n
Cycles through percentile markers	ctrl-p
Change chart type (area, line . . . )	ctrl-t
Switch main views (charts, statistics, percentiles, goodness of fit)	ctrl - <spacebar>
Chart properties (2D/3D, Transparency...)	<spacebar>

## Notes:

*ctrl-b, ctrl-m, and ctrl-p don't apply to trend or sensitivity charts.*

*ctrl - <spacebar> doesn't apply to trend charts.*

*For sensitivity charts, ctrl-t cycles through Bar (directional), Bar (magnitude) and Pie (in Contribution to Variance view).*